

CSI controls

Product Catalog/List Pricing



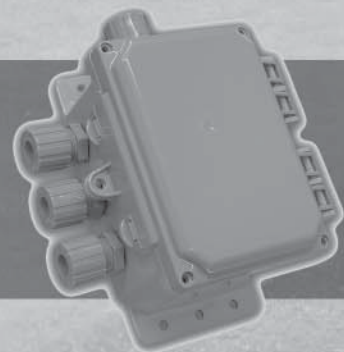
Control Panels

- Power Zone™
- Fusion™
- RK Series™



Alarm Systems

- CS 2004 CS 2004E
- CS 1200 CS 1000
- AlarmBot™



Accessories

- Floats & Brackets
- Weights
- Junction Boxes



Ordering Information

About this Price Booklet...

This Suggested List Price Booklet is a consolidation of all CSI Controls' standard panels, alarm, and accessories. This price booklet corresponds to products from multiple product catalogs. If you have questions, please contact your Distributor, a CSI Sales Representative or the factory at 1-800-363-5842.

Possession of this booklet or other CSI Controls product catalogs does not constitute an offer to sell. To be qualified as a Factory Direct customer, please contact a CSI Sales Representative or the factory.

Prices, specifications, product offerings and policies are subject to change without notice.

Placing an Order

For Factory Direct Accounts to assist us in delivering the exact product you want, please order by the seven digit part number or panel model number. If you do not find the product you are looking for in our catalog, please contact your Customer Service Representative at 1-800-363-5842. CSI Controls also manufactures custom control panels. To order, contact your Customer Service Representative at 1-800-363-5842.

Order Shipping

Standard catalog products, depending on volume and options, are shipped within five (5) business days from receipt of order. CSI ships in-stock items same day when requested. Control panels ordered with multiple options and orders exceeding \$5000.00 may require up to ten (10) business days to ship. Large stocking control panel orders may require additional lead time of more than ten (10) business days. Next Day Air, Second Day Air and Three Day UPS Ground services are available to expedite orders. To receive these services, you must place your order before 1:00 p.m. Eastern Time.

Warranty Return Policy

CSI Controls offers a three-year limited warranty on most products. However, some product warranties may vary. For more information on warranties, please call 1-800-363-5842. Returned Material Authorization (RMA) numbers must be assigned to products being returned for a warranty claim. Contact your customer Service Representative at 1-800-363-5842 for instructions on returning a product warranty.

Key Factory Contacts

To reach CSI staff who can assist you with your order, please call 1-800-363-5842.

Mark McCollum
CSI Sales Manager ext. 140

Krista Cline
Inside Sales/Customer Service ext. 132

Mark Santarossa
Stock Product Production Manager ext. 134

Wayne Fannon
Technical Support/New Product Development ext. 127

TABLE OF CONTENTS

Control Panels	Page #
Power Zone™ Economy Float Panel	1
Power Zone™ Simplex Float Panel	1
Power Zone™ Duplex Float Panel	1
Fusion™ Economy	2
Fusion™ Simplex Float Panel	2
Fusion™ Duplex Float Panel	2
RK Series™ Simplex Float Panel	3
RK Series™ Duplex Float Panel	3
RK Series™ Display Option Overview	4
Alarm Systems	
Alarm Bot™	5
CS2004E	5
CS2004	5
CS1200	5
CS1000	5
Control Floats	
Control Duty Narrow Angle Mechanical Control Switch	6
Control Duty Narrow Angle Low Current Mechanical Control Switch	6
Control Duty Narrow Angle Mercury Control Switch	6
Control Duty Narrow Angle Mini Mercury Control Switch	7
Control Duty Vertical Reed Switch	7
Pump Floats	
Medium Duty Wide Angle Mechanical Pump Switch	8
Heavy Duty Wide Angle Mechanical Pump Switch	8
Medium Duty Wide Angle Mercury Pump Switch	9
Medium Duty Wide Angle Mini Mercury Pump Switch	9
Medium Duty Limited Space Pump Switch	9
Medium Duty Wide Angle Dual Pump Switch	10
Accessories	
Float Accessories	11
Junction Boxes	11
Pedestals	11



**220 Ohio Street
Ashland, OH 44805
PH: 800-363-5842
FAX: 419-289-2535
www.csicontrols.com**

CONTROL PANELS

POWER ZONE™ PANELS -

Single phase, simplex or duplex demand dose or timed dose float controlled system for pump control and system monitoring.



POWER ZONE JR. SIMPLEX FLOAT PANELS

MODEL #	MAX FLA	ENCLOSURE TYPE	ENCLOSURE MATERIAL	INPUT POWER VAC - PH	LIST PRICE PANEL ONLY
PZJRF115	16	NEMA 4X	Polycarbonate	115-1	\$243.00
PZJRF230	16	NEMA 4X	Polycarbonate	230-1	\$263.00
OPTIONS	DESCRIPTION				LIST ADDER
F	(2) 15 foot float switches - one pump switch and one control switch				\$40
HO	Includes a 2" hub to mount enclosure on a 2" conduit & an outlet that allows for plug-in installation of pump. (115V - 15 amp max.)				\$10
D	Dual Power - Separates incoming power to Pump & Alarm/Control				115V - \$10 230V - \$25

Example with all options selected: PZJRF115-F-HO-D = \$303.00 List

POWER ZONE SIMPLEX FLOAT PANELS

MODEL #	MAX FLA	ENCLOSURE TYPE	INPUT POWER VAC - PH	CIRCUIT BREAKERS	LIST PRICE PANEL ONLY
PZSF115	20	NEMA 4X	115-1	None	\$382.00
PZSF115CB	16	NEMA 4X	115-1	Motor & Alarm	\$494.00
PZSF115ACB	16	NEMA 4X	115-1	Motor, Control & Alarm	\$510.00
PZSF230	20	NEMA 4X	230-1	None	\$391.00
PZSF230CB	16	NEMA 4X	230-1	Motor & Alarm	\$510.00
PZSF230ACB	16	NEMA 4X	230-1	Motor, Control & Alarm	\$527.00
OPTIONS	DESCRIPTION				LIST ADDER
F	(3) 20 foot mechanical control switches				\$75
X	Auxiliary Alarm & Redundant Off				\$40
HD	Heavy Duty - Increases breakers and wire gauge to allow 16-20 FLA (N/A with 115V outlet)				\$20
PED	Poly Pedestal with access door				\$96
TD	Time Dosing Program				\$46

Example with Floats, Outlet, and Pedestal: PZSF115CB-F-PED-TD = \$711.00 List

POWER ZONE DUPLEX FLOAT PANELS

MODEL #	MAX FLA	ENCLOSURE TYPE	INPUT POWER VAC - PH	CIRCUIT BREAKERS	LIST PRICE PANEL ONLY
PZDF115	20	NEMA 4X	115-1	None	\$504.00
PZDF115CB	16	NEMA 4X	115-1	Motor & Control	\$630.00
PZDF115ACB	16	NEMA 4X	115-1	Motor, Control & Alarm	\$647.00
PZDF230	20	NEMA 4X	230-1	None	\$512.00
PZDF230CB	16	NEMA 4X	230-1	Motor & Control	\$674.00
PZDF230ACB	16	NEMA 4X	230-1	Motor, Control & Alarm	\$691.00
OPTIONS	DESCRIPTION				LIST ADDER
F	(4) 20 foot mechanical control switches				\$100
X	Auxiliary Alarm & Redundant Off				\$40
HD	Heavy Duty - Increases breakers and wire gauge to allow 16-20 FLA (N/A with 115V outlet)				\$20
PED	Poly Pedestal with access door				\$96

Example with Floats and Pedestal: PZDF115CB-F-PED = \$826.00 List

CONTROL PANELS

FUSION™ PANELS -

Single phase, simplex or duplex demand dose float controlled system for pump control and system monitoring.

FUSION



ECONOMY FUSION SIMPLEX FLOAT PANELS

MODEL #	MAX FLA	ENCLOSURE TYPE	INPUT POWER VAC - PH	CIRCUIT BREAKERS	LIST PRICE PANEL ONLY
EFS115	12	NEMA 4X	115-1	None	\$327.00
EFS115CB	12	NEMA 4X	115-1	Motor & Control	\$359.00
EFS115ACB	12	NEMA 4X	115-1	Motor, Control & Alarm	\$404.00
EFS230	12	NEMA 4X	230-1	None	\$341.00
EFS230CB	12	NEMA 4X	230-1	Motor & Control	\$383.00
EFS230ACB	12	NEMA 4X	230-1	Motor, Control & Alarm	\$429.00
OPTIONS	DESCRIPTION				LIST ADDER
F	(3) 20 foot control switches				\$75
HD1	Heavy Duty 1: Increase breakers & wire gauge to allow 12-18 FLA				\$20
HD2	Heavy Duty 2: Increase breakers & wire gauge to allow 18-24 FLA				\$30

Example with Floats and Heavy Duty 2: EFS115CB-F-HD2 = \$464.00 List

FUSION SIMPLEX FLOAT PANELS

MODEL #	MAX FLA	ENCLOSURE TYPE	INPUT POWER VAC - PH	CIRCUIT BREAKERS	LIST PRICE PANEL ONLY
FS115	12	NEMA 4X	115-1	None	\$453.00
FS115CB	12	NEMA 4X	115-1	Motor & Control	\$502.00
FS115ACB	12	NEMA 4X	115-1	Motor, Control & Alarm	\$540.00
FS230	12	NEMA 4X	230-1	None	\$457.00
FS230CB	12	NEMA 4X	230-1	Motor & Control	\$532.00
FS230ACB	12	NEMA 4X	230-1	Motor, Control & Alarm	\$567.00
OPTIONS	DESCRIPTION				LIST ADDER
F	(3) 20 foot control switches				\$75
HD1	Heavy Duty 1: Increase breakers & wire gauge to allow 12-18 FLA				\$20
HD2	Heavy Duty 2: Increase breakers & wire gauge to allow 18-24 FLA				\$30

Example with Floats: FS115CB-F = \$577.00 List

FUSION DUPLEX FLOAT PANELS

MODEL #	MAX FLA	ENCLOSURE TYPE	INPUT POWER VAC - PH	CIRCUIT BREAKERS	LIST PRICE PANEL ONLY
FD115	12	NEMA 4X	115-1	None	\$790.00
FD115CB	12	NEMA 4X	115-1	Motor & Control	\$842.00
FD115ACB	12	NEMA 4X	115-1	Motor, Control & Alarm	\$876.00
FD230	12	NEMA 4X	230-1	None	\$822.00
FD230CB	12	NEMA 4X	230-1	Motor & Control	\$896.00
FD230ACB	12	NEMA 4X	230-1	Motor, Control & Alarm	\$927.00
OPTIONS	DESCRIPTION				LIST ADDER
F	(4) 20 foot control switches				\$100
HD1	Heavy Duty 1: Increase breakers & wire gauge to allow 12-18 FLA				\$30
HD2	Heavy Duty 2: Increase breakers & wire gauge to allow 18-24 FLA				\$40

Example with Heavy Duty 1: FD115ACB-HD1 = \$906.00 List

CONTROL PANELS

RK SERIES™ PANELS -

Single phase, simplex or duplex demand dose or timed dose float controlled system for pump control and system monitoring.

RK Series



RK SERIES SIMPLEX FLOAT PANELS

MODEL #	MAX FLA	ENCLOSURE TYPE	INPUT POWER VAC - PH	CIRCUIT BREAKERS	LIST PRICE PANEL ONLY
RKSF115	12	NEMA 4X	115-1	None	\$517.00
RKSF115CB	12	NEMA 4X	115-1	Motor & Control	\$544.00
RKSF115ACB	12	NEMA 4X	115-1	Motor, Control & Alarm	\$561.00
RKSF230	12	NEMA 4X	230-1	None	\$533.00
RKSF230CB	12	NEMA 4X	230-1	Motor & Control	\$588.00
RKSF230ACB	12	NEMA 4X	230-1	Motor, Control & Alarm	\$610.00
OPTIONS	DESCRIPTION				LIST ADDER
F	(3) 20 foot control switches				\$75
GR	Grey Enclosure (black enclosure is standard)				\$0
X	Auxiliary Alarm and Redundant Off				\$40
HD1	Heavy Duty 1: Increase breakers & wire gauge to allow 12-18 FLA				\$20
HD2	Heavy Duty 2: Increase breakers & wire gauge to allow 18-24 FLA				\$30
DC	Digital Display Center				\$85
DCTD	Time Dosing DDC				\$127
IB	Digital Interface Board				\$125
IBTD	Time Dosing DIB				\$205

Example with Floats and Time Dose DDC: RKSF115CB-F-DCTD = \$746.00 List

RK SERIES DUPLEX FLOAT PANELS

MODEL #	MAX FLA	ENCLOSURE TYPE	INPUT POWER VAC - PH	CIRCUIT BREAKERS	LIST PRICE PANEL ONLY
RKDF115	12	NEMA 4X	115-1	None	\$667.00
RKDF115CB	12	NEMA 4X	115-1	Motor & Control	\$716.00
RKDF115ACB	12	NEMA 4X	115-1	Motor, Control & Alarm	\$738.00
RKDF230	12	NEMA 4X	230-1	None	\$674.00
RKDF230CB	12	NEMA 4X	230-1	Motor & Control	\$794.00
RKDF230ACB	12	NEMA 4X	230-1	Motor, Control & Alarm	\$816.00
OPTIONS	DESCRIPTION				LIST ADDER
F	(4) 20 foot control switches				\$100
GR	Grey Enclosure (black enclosure is standard)				\$0
X	Auxiliary Alarm and Redundant Off				\$40
HD1	Heavy Duty 1: Increase breakers & wire gauge to allow 12-18 FLA				\$20
HD2	Heavy Duty 2: Increase breakers & wire gauge to allow 18-24 FLA				\$30
DC	Digital Display Center				\$170
DCTD	Time Dosing DDC				\$250
IB	Digital Interface Board				\$254
IBTD	Time Dosing DIB				\$399

Example with Floats: RKDF115CB-F = \$791.00 List

CONTROL PANELS

RK SERIES™ DISPLAYS

The RK Series™ Displays are available factory installed or as an accessory that can be easily field installed. Installing either display is as simple as removing the factory installed removable face plate and inserting the new or upgraded display from the back side of the sub-door. Once installed, the displays enable viewing of panel information such as Elapsed Run Time Meters and Cycle Counters for each pump. Incorporating a Timed Dosing display transforms a basic level control panel into a programmable time dose panel. Timed dosing provides capabilities such as: Pump Run Time, Pump Off Time, Override Pump Run Time, Override Pump Off Time, and more (Time Dosing functionality varies between the DDC & DIB). The RK Series Displays are constantly being improved with new features. Please consult the factory or website periodically for the most up-to-date available features

The RK Series displays are currently available in two versions - the Digital Display Center (DDC), and the Digital Interface Board (DIB). The DDC display utilizes a (4) four character LED display screen while the DIB incorporates a two line, 16 character display screen providing a more complete read out for the user.

DIGITAL DISPLAY CENTER (DDC) - 4 CHARACTER READ OUT

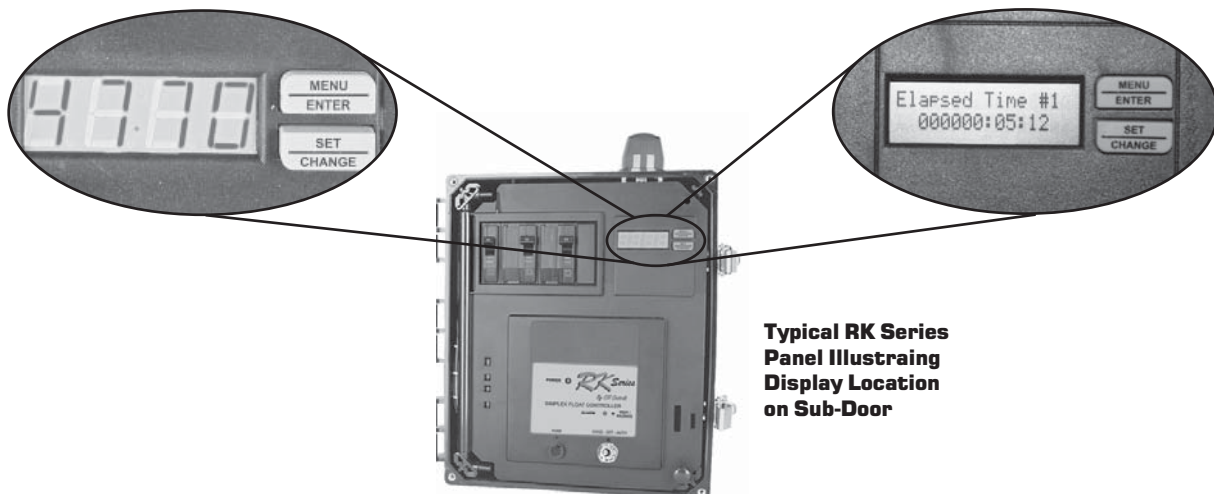
MODEL#	DESCRIPTION	LIST PRICE	FEATURES
DDCS	Simplex Elapsed Time Meter & Cycle Counter	\$85.00	<ul style="list-style-type: none"> • 4 Character LED Display • Works with Float Panels • Simplex or Duplex • Elapsed Time Meter(s) • Cycle Counter(s) • Lead Pump Selector (Duplex Panels) • Low Level Alarm Option
DDCSTD	Simplex Timed Dosing w/Time Meter & Counter	\$125.00	
DDCD	Duplex Elapsed Time Meter & Cycle Counter	\$170.00	
DDCSTD	Duplex Timed Dosing w/Time Meter & Counter	\$254.00	

DIGITAL INTERFACE BOARD (DIB) - 32 CHARACTER READ OUT

MODEL#	DESCRIPTION	LIST PRICE	FEATURES
DIBS	Simplex Elapsed Time Meter & Cycle Counter	\$125.00	<ul style="list-style-type: none"> • 32 Character LCD Display • High Level Counter • More Advanced Time Dosing • On-Screen Alarm Annunciation • Pump Failure Alarm (Duplex Panels) • Alarm History (last 3 alarms) • Three Auxiliary 120V AC Inputs
DIBD	Duplex Elapsed Time Meter & Cycle Counter	\$250.00	
DIBSTD	Simplex Time Dosing w/Elapsed Time Meter & Cycle Counter	\$205.00	
DIBSTD	Duplex Time Dosing w/Elapsed Time Meter & Cycle Counter	\$399.00	

Digital Display Center (DDC)

Digital Interface Board (DIB)



Typical RK Series Panel Illustrating Display Location on Sub-Door

ALARM SYSTEMS

ALARM BOT

PART #	DESCRIPTION	LIST PRICE
1031358	NEMA 4X outdoor post alarm with 360° visual alert. Includes 20ft float switch.	\$220.00
OPTIONS	DESCRIPTION	LIST ADDER
NF	No Float Included - Deduct Standard 20ft alarm float	(-\$30)

Example: ALARM BOT = \$220.00



CS2004E

PART #	DESCRIPTION	LIST PRICE
1025707	NEMA 4X outdoor alarm with alarm light and test-normal-silence toggle switch. Includes a 15ft float switch and power cord with 3/8" seal-tight cord connectors.	\$151.50
OPTIONS	DESCRIPTION	LIST ADDER
NF	No Float Included - Deduct Standard 15ft alarm float	(-\$30)
H	Exchanges the cord grips and power cord for a 2" hub adapter to mount over 2" electrical conduit.	\$0

Example: CS2004E-H = \$151.50 List



CS2004

PART #	DESCRIPTION	LIST PRICE
1025605	NEMA 4X outdoor alarm with LED alarm lights and touch to test/touch to silence circuitry. Includes a 15ft float switch and a 6ft power cord w/3/8" seal-tight cord connectors.	\$162.50
OPTIONS	DESCRIPTION	LIST ADDER
NF	No Float Included - Deduct Standard 15ft alarm float	(-\$30)
H	Exchanges the cord grips and power cord for a 2" hub adapter to mount over 2" electrical conduit.	\$0
X	Provides one set of Aux. Alarm Contacts	\$45

Example: CS2004-H-X = \$207.50



CS1200

PART #	DESCRIPTION	LIST PRICE
1023234	NEMA 1 non-metallic indoor alarm with auto-reset battery backup feature. Includes a 15 foot float switch and a 6ft power cord.	\$99.28
OPTIONS	DESCRIPTION	LIST ADDER
AUX	Auxiliary Alarm Contacts (CSA certified only unit)	\$16.58
NF	No Float Included - Deduct Standard 15ft alarm float	(-\$30)

Example: CS1200-AUX = \$115.86

Note: Low level float and longer float lengths available.



CS1000

PART #	DESCRIPTION	LIST PRICE
1023236	NEMA 1 indoor alarm with manual reset feature. Includes a 15 foot float switch and a 6ft power cord.	\$117.23
OPTIONS	DESCRIPTION	LIST ADDER
NF	No Float Included - Deduct Standard 15ft alarm float	(-\$30)
SPKT	Splice kit	\$6.26

Example: CS1000-SPKT = \$123.49

Note: Low level float and longer float lengths available.



CONTROL FLOATS

FLOAT SWITCHES

Due to the many variations of control floats, please consult your local Representative or the factory for our full offering of floats.

CONTROL DUTY - NARROW ANGLE MECHANICAL CONTROL SWITCHES					
PART #	DESCRIPTION	PART #	DESCRIPTION	LIST PRICE	SPECIFICATIONS
1031484	15CSPCNO	1031485	15CSPCNC	\$35.27	ELECTRICAL: 125 VAC or 250 VAC 5 Amps CONTROL DIFFERENTIAL: Approx. 1.5 in above or below horizontal.
1031486	15CSWENO	1031487	15CSWENC	\$42.45	
1031488	20CSPCNO	1031489	20CSPCNC	\$38.27	
1031490	20CSWENO	1031491	20CSWENC	\$45.45	
1031492	30CSPCNO	1031493	30CSPCNC	\$44.79	
1031494	30CSWENO	1031495	30CSWENC	\$51.94	
1031496	50CSPCNO	1031497	50CSPCNC	\$60.79	
1031498	50CSWENO	1031499	50CSWENC	\$67.94	



CS = Control Switch PC = Pipe Clamp WE = Weighted Externally NO = Normally Open NC = Normally Closed

NOTE: Descriptions are grouped by cable length measured in feet (15, 20, 30, 50).

MOUNTING CLAMP is standard. If mounting clamp is not required, specify and deduct 60¢ from list price of "PC" model.

PACKAGING: Bagged - Standard Boxed - Specify and add \$1.80 to list price. Bulk - Specify and deduct 20¢ from list price.

ADDITIONAL CABLE: Additional cable length over 50 feet is available at 80¢ per foot (list price).

CONTROL DUTY - NARROW ANGLE LOW CURRENT MECHANICAL CONTROL SWITCHES					
PART #	DESCRIPTION	PART #	DESCRIPTION	LIST PRICE	SPECIFICATIONS
1031500	15CSLPCNO	1031501	15CSLPCNC	\$38.81	ELECTRICAL: 125 VAC & 30 VDC Maximum Electrical Load: 0.1 Amps Minimum Electrical Load: 0.160 mA 5VDC Minimum Electrical Load: 1 mA CONTROL DIFFERENTIAL: Approx. 1.5 in above or below horizontal.
1031502	15CSLWENO	1031503	15CSLWENC	\$45.43	
1031504	20CSLPCNO	1031505	20CSLPCNC	\$41.58	
1031506	20CSLWENO	1031507	20CSLWENC	\$48.20	
1031508	30CSLPCNO	1031509	30CSLPCNC	\$47.59	
1031510	30CSLWENO	1031511	30CSLWENC	\$54.21	
1031512	50CSLPCNO	1031513	50CSLPCNC	\$63.59	
1031514	50CSLWENO	1031515	50CSLWENC	\$70.21	



CS = Control Switch LC = Low Current PC = Pipe Clamp WE = Weighted Externally NO = Normally Open NC = Normally Closed

NOTE: Descriptions are grouped by cable length measured in feet (15, 20, 30, 50).

MOUNTING CLAMP is standard. If mounting clamp is not required, specify and deduct 60¢ from list price of "PC" model.

PACKAGING: Bagged - Standard Boxed - Specify and add \$1.80 to list price. Bulk - Specify and deduct 20¢ from list price.

ADDITIONAL CABLE: Additional cable length over 50 feet is available at 80¢ per foot (list price).

CONTROL DUTY - NARROW ANGLE MERCURY CONTROL SWITCHES				
PART #	DESCRIPTION	LIST PRICE	SPECIFICATIONS	
1032520	15CSVPCNO	\$41.23	ELECTRICAL: 120 VAC or 230 VAC 5 Amps CONTROL DIFFERENTIAL: Approx. 5 in above or below horizontal.	
1032526	15CSVPCNC	\$41.23		
1032521	20CSVPCNO	\$44.38		
1032527	20CSVPCNC	\$44.38		
1032522	25CSVPCNO	\$53.38		
1019642P	25CSVWENO	\$60.40		
1032523	30CSVPCNO	\$51.23		
1032528	30CSVPCNC	\$51.23		
1032524	35CSVPCNO	\$60.23		
1032525	50CSVPCNO	\$67.23		



CS = Control Switch V = Mercury PC = Pipe Clamp WE = Weighted Externally NO = Normally Open NC = Normally Closed

MOUNTING CLAMP is standard. If mounting clamp is not required, specify and deduct 60¢ from list price of "PC" model.

PACKAGING: Bagged - Standard Boxed - Specify and add \$1.80 to list price. Bulk - Specify and deduct 20¢ from list price.

ADDITIONAL CABLE: Additional cable length over 50 feet is available at 80¢ per foot (list price).

CONTROL FLOATS

CONTROL DUTY - NARROW ANGLE MINI MERCURY CONTROL SWITCHES

PART #	DESCRIPTION	LIST PRICE	SPECIFICATIONS
1032529	10CSMVNO	\$34.82	ELECTRICAL: 120 VAC or 230 VAC 5 Amps CONTROL DIFFERENTIAL: Approx. 5 in above or below horizontal.
1032533	10CSMVNC	\$34.82	
1032530	15CSMVNO	\$38.12	
1032534	15CSMVNC	\$38.12	
1032531	20CSMVNO	\$41.37	
1032535	20CSMVNC	\$41.37	
1032532	30CSMVNO	\$48.34	
1032536	30CSMVNC	\$48.34	



CS = Control Switch MV = Mini Mercury NO = Normally Open NC = Normally Closed

MOUNTING CLAMP is standard. If mounting clamp is not required, specify and deduct 60¢ from list price of "PC" model.

PACKAGING: Bagged - Standard **Boxed** - Specify and add \$1.80 to list price. **Bulk** - Specify and deduct 20¢ from list price.

ADDITIONAL CABLE: Additional cable length over 30 feet is available at 80¢ per foot (list price).

CONTROL DUTY - VERTICAL REED SWITCH

PART #	DESCRIPTION	LIST PRICE	SPECIFICATIONS
1032426P	15CSRS1	\$77.50	ELECTRICAL: 250mA, 12-125 VAC, 50/60 Hz 500mA, 6-12 VDC, 50/60 Hz MAXIMUM ANGLE FROM VERTICAL: 5° CONTROL DIFFERENTIAL: Approx. .375 inch

CS = Control Switch RS = Reed Switch 1 = 120VAC



PUMP FLOATS

FLOAT SWITCHES

Due to the many variations of pump floats, please consult your local Representative or the factory for our full offering of floats.

MEDIUM DUTY - WIDE ANGLE MECHANICAL PUMP SWITCHES					
PART #	DESCRIPTION	PART #	DESCRIPTION	LIST PRICE	SPECIFICATIONS
1031516	15PSD1WP	1031517	15PSU1WP	\$58.04	ELECTRICAL: 125 VAC or 250 VAC MAXIMUM PUMP RUN CURRENT: 13 Amps MAXIMUM PUMP START CURRENT: 78 Amps
1031518	15PSDWOP	1031519	15PSUWOP	\$51.26	
1031520	20PSD1WP	1031521	20PSU1WP	\$61.18	
1031522	20PSDWOP	1031523	20PSUWOP	\$54.26	
1031524	30PSD1WP	1031525	30PSU1WP	\$67.55	
1031526	30PSDWOP	1031527	30PSUWOP	\$60.77	
1031528	50PSD1WP	1031529	50PSU1WP	\$83.55	
1031530	50PSDWOP	1031531	50PSUWOP	\$76.77	

PS = Pump Switch D = Pump Down U = Pump Up 1 = 125VAC 2 = 250VAC WP = With Plug WOP = With Out Plug

NOTE: Descriptions are grouped by cable length measured in feet (15, 20, 30, 50).

MOUNTING CLAMP is standard. If mounting clamp is not required, specify and deduct 60¢ from list price.

CABLE WEIGHT MOUNTING is also available.

PACKAGING: Boxed - Standard Bagged - Specify and deduct 40¢ from list price. Bulk - Specify and deduct 60¢ from list price.

ADDITIONAL CABLE: Additional cable length over 50 feet is available at 80¢ per foot (list price).



HEAVY DUTY - WIDE ANGLE MECHANICAL PUMP SWITCHES					
PART #	DESCRIPTION	PART #	DESCRIPTION	LIST PRICE	SPECIFICATIONS
1031534	15PSPD1WP	1031537	15PSPU1WP	\$78.65	ELECTRICAL: 120 VAC or 230 VAC MAXIMUM PUMP RUN CURRENT: 15 Amps MAXIMUM PUMP START CURRENT: 85 Amps RECOMMENDED PUMP HP: 120V - 3/4 HP or less 230V - 2HP or less
1031535	15PSPD2WP	1031538	15PSPU2WP	\$80.62	
1031536	15PSPDWOP	1031539	15PSPUWOP	\$71.89	
1031540	20PSPD1WP	1031543	20PSPU1WP	\$81.91	
1031541	20PSPD2WP	1031544	20PSPU2WP	\$83.87	
1031542	20PSPDWOP	1031545	20PSPUWOP	\$75.15	
1031546	30PSPD1WP	1031549	30PSPU1WP	\$89.07	
1031547	30PSPD2WP	1031550	30PSPU2WP	\$91.03	
1031548	30PSPDWOP	1031551	30PSPUWOP	\$82.30	
1031552	50PSPD1WP	1031555	50PSPU1WP	\$121.07	
1031553	50PSPD2WP	1031556	50PSPU2WP	\$123.03	
1031554	50PSPDWOP	1031557	50PSPUWOP	\$114.30	

PS = Pump Switch D = Pump Down U = Pump Up 1 = 120VAC 2 = 230VAC WP = With Plug WOP = With Out Plug

NOTE: Descriptions are grouped by cable length measured in feet (15, 20, 30, 50).

MOUNTING CLAMP is standard. If mounting clamp is not required, specify and deduct 60¢ from list price.

CABLE WEIGHT MOUNTING is also available.

PACKAGING: Boxed - Standard Bagged - Specify and deduct 40¢ from list price. Bulk - Specify and deduct 60¢ from list price.

ADDITIONAL CABLE: Additional cable length over 50 feet is available at \$1.60 per foot (list price).



PUMP FLOATS

MEDIUM DUTY - WIDE ANGLE MERCURY PUMP SWITCHES

PART #	DESCRIPTION	PART #	DESCRIPTION	LIST PRICE	SPECIFICATIONS
1032555	15PSVD1WP	1032558	15PSVU1WP	\$108.62	ELECTRICAL: 1 HP, 120 VAC 2 HP, 230 VAC
1032556	15PSVD2WP	1032559	15PSVU2WP	\$110.67	
1032557	15PSVDWOP	1032560	15PSVUWOP	\$101.24	MAXIMUM PUMP RUN CURRENT: 15 Amps - 120V 12 Amps - 230V
1032561	20PSVD1WP	1032564	20PSVU1WP	\$111.92	
1032562	20PSVD2WP	1032565	20PSVU2WP	\$113.96	MAXIMUM PUMP START CURRENT: 55 Amps - 120V 35 Amps - 230V
1032563	20PSVDWOP	1032566	20PSVUWOP	\$104.53	
1032567	30PSVD1WP	1032570	30PSVU1WP	\$119.56	
1032568	30PSVD2WP	1032571	30PSVU2WP	\$121.75	
1032569	30PSVDWOP	1032572	30PSVUWOP	\$112.32	



PS = Pump Switch V = Mercury D = Pump Down U = Pump Up 1 = 120VAC 2 = 230VAC WP = With Plug WOP = With Out Plug

NOTE: Descriptions are grouped by cable length measured in feet (15, 20, 30).

MOUNTING CLAMP is standard. If mounting clamp is not required, specify and deduct 60¢ from list price.

PACKAGING: Boxed - Standard Bagged - Specify and deduct 40¢ from list price. **Bulk -** Specify and deduct 60¢ from list price.

ADDITIONAL CABLE: Additional cable length over 30 feet is available at \$1.60 per foot (list price).

MEDIUM DUTY - WIDE ANGLE MINI MERCURY PUMP SWITCHES

PART #	DESCRIPTION	PART #	DESCRIPTION	LIST PRICE	SPECIFICATIONS
1032537	15PSJVD1WP	1032540	15PSJVU1WP	\$63.79	ELECTRICAL: 1/2 HP, 120 VAC 1 HP, 230 VAC
1032538	15PSJVD2WP	1032541	15PSJVU2WP	\$65.99	
1032539	15PSJVDWOP	1032542	15PSJVUWOP	\$56.54	MAXIMUM PUMP RUN CURRENT: 13 Amps - 120V 8 Amps - 230V
1032543	20PSJVD1WP	1032546	20PSJVU1WP	\$67.07	
1032544	20PSJVD2WP	1032547	20PSJVU2WP	\$69.25	MAXIMUM PUMP START CURRENT: 40 Amps - 120V 20 Amps - 230V
1032545	20PSJVDWOP	1032548	20PSJVUWOP	\$59.83	
1032549	30PSJVD1WP	1032552	30PSJVU1WP	\$74.19	
1032550	30PSJVD2WP	1032553	30PSJVU2WP	\$76.24	
1032551	30PSJVDWOP	1032554	30PSJVUWOP	\$66.81	



PS = Pump Switch JV = Junior Mercury D = Pump Down U = Pump Up 1 = 120VAC 2 = 230VAC WP = With Plug WOP = With Out Plug

NOTE: Descriptions are grouped by cable length measured in feet (15, 20, 30).

MOUNTING CLAMP is standard. If mounting clamp is not required, specify and deduct 60¢ from list price.

PACKAGING: Boxed - Standard Bagged - Specify and deduct 40¢ from list price. **Bulk -** Specify and deduct 60¢ from list price.

ADDITIONAL CABLE: Additional cable length over 30 feet is available at 80¢ per foot (list price).

MEDIUM DUTY - LIMITED SPACE PUMP SWITCH

PART #	DESCRIPTION	LIST PRICE	SPECIFICATIONS
1023372P	15PSLSD1WP	\$60.94	ELECTRICAL: 1/2 HP, 120 VAC 1 HP, 230 VAC
1032427P	20PSLSD1WP	\$63.93	
<p>PS = Pump Switch LS = Limited Space D = Pump Down U = Pump Up 1 = 120VAC 2 = 230VAC WP = With Plug WOP = With Out Plug MOUNTING BRACKET and HOSE CLAMP are standard.</p> <p>PACKAGING: Boxed - Standard</p> <p>ADDITIONAL CABLE: Additional cable length over 30 feet is available at 80¢ per foot (list price).</p>			<p>MAXIMUM PUMP RUN CURRENT: 13 Amps - 120V 12 Amps - 230V</p> <p>MAXIMUM PUMP START CURRENT: 60 Amps - 120V 60 Amps - 230V</p>



PUMP FLOATS

MEDIUM DUTY - WIDE ANGLE DUAL PUMP SWITCHES

PART #	DESCRIPTION	PART #	DESCRIPTION	LIST PRICE	SPECIFICATIONS
1033129	15PSDFD1WP	1033133	15PSDFU1WP	\$122.54	ELECTRICAL: 15 FLA, 90 LRA 120 or 240V MAXIMUM PUMP RUN CURRENT: 15 Amps - 120V 15 Amps - 240V MAXIMUM PUMP START CURRENT: 90 Amps - 120V 90 Amps - 240V
1033130	15PSDFD2WP	1033134	15PSDFU2WP	\$125.83	
1033131	15PSDFD1WOP	1033135	15PSDFU1WOP	\$115.32	
1033132	15PSDFD2WOP	1033136	15PSDFU2WOP	\$117.74	
1033137	20PSDFD1WP	1033141	20PSDFU1WP	\$127.10	
1033138	20PSDFD2WP	1033142	20PSDFU2WP	\$130.38	
1033139	20PSDFD1WOP	1033143	20PSDFU1WOP	\$119.89	
1033140	20PSDFD2WOP	1033144	20PSDFU2WOP	\$122.29	
1033145	30PSDFD1WP	1033149	30PSDFU1WP	\$136.83	
1033146	30PSDFD2WP	1033150	30PSDFU2WP	\$140.12	
1033147	30PSDFD1WOP	1033151	30PSDFU1WOP	\$129.74	
1033148	30PSDFD2WOP	1033152	30PSDFU2WOP	\$132.02	



PS = Pump Switch DF = Dual Float D = Pump Down U = Pump Up 1 = 120VAC 2 = 230VAC WP = With Plug WOP = With Out Plug

NOTE: Descriptions are grouped by cable length measured in feet (15, 20, 30).

MOUNTING CLAMP is standard. If mounting clamp is not required, specify and deduct 60¢ from list price.

PACKAGING: Boxed - Standard Bagged - Specify and deduct 40¢ from list price. Bulk - Specify and deduct 60¢ from list price.

ADDITIONAL CABLE: Additional cable length over 30 feet is available at \$1.60 per foot (list price).

ACCESSORIES

FLOAT ACCESSORIES

PART #	DESCRIPTION	LIST PRICE
1008569P	Pipe Mount stainless clamp for tethering floats	\$5.00
1028644	Iron Weight Assembly	\$8.00
1002230P	Cable Weight Assembly	\$9.04
1027830	304 Stainless Steel Float Bracket with 3 black cord snubbers	\$38.46
1027647	304 Stainless Steel float Bracket with 4 black cord snubbers	\$46.62



1008569P



1028644



1002230P



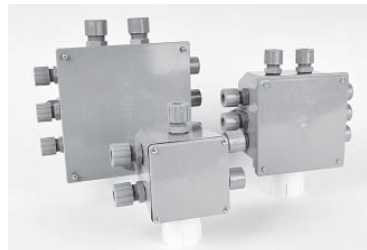
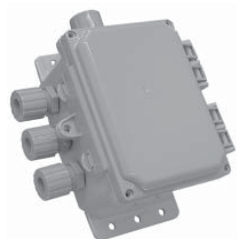
1027830



1027647

JUNCTION BOXES

CSI offers a variety of junction boxes. Please consult the factory for box sizes, configurations and pricing.



PEDESTALS

PART #	DESCRIPTION	LIST PRICE
1027163	Poly Pedestal for use with 10X8 enclosures	\$96.00

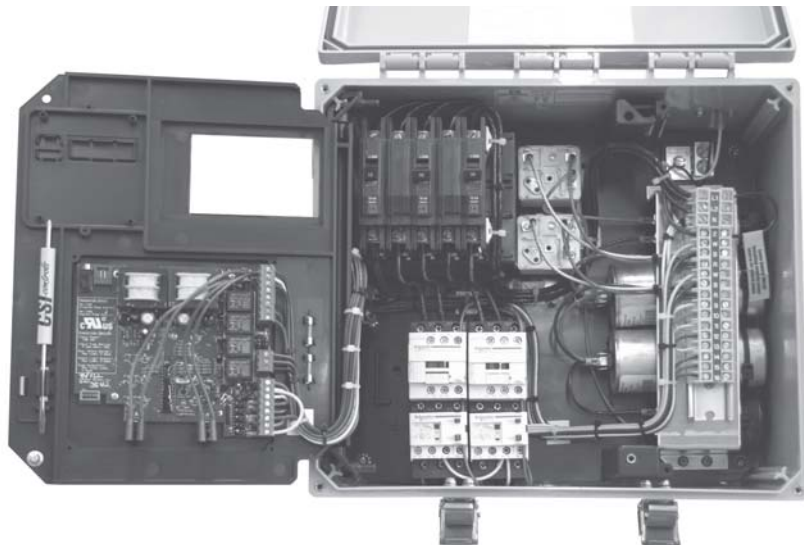
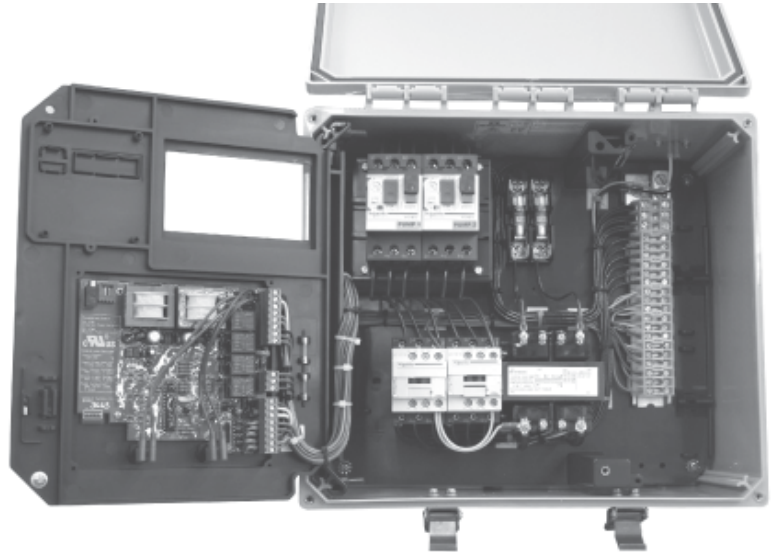


SPECIAL CONFIGURATIONS

CSI Controls™ specializes in designing and fabricating control systems for a wide variety of water and wastewater applications. Many of our standard products are available in special configurations. (Longer lead times may apply.)

Common Available Configurations include:

- Three phase control panels
- Panels requiring start components
- Generator receptacles
- Heat sensor and seal failure indication
- Auto Dialers



UL Listed Panel Shop
UL 508A Listing
for industrial control panels



In addition to design and configuration, our engineers provide full documentation (CAD schematics), technical support and field start-up assistance (when requested).

With CSI in control, you can be confident your project is handled by experienced professionals every step of the way.

Call for a quote today!

1-800-363-5842 toll free



CSI *controls*™

**220 Ohio Street
Ashland, OH 44805
PH: 800-363-5842
FAX: 419-289-2535
www.csicontrols.com**