

Minuteman V

Level Alert Outdoor Pedestal Alarm Installation Instructions

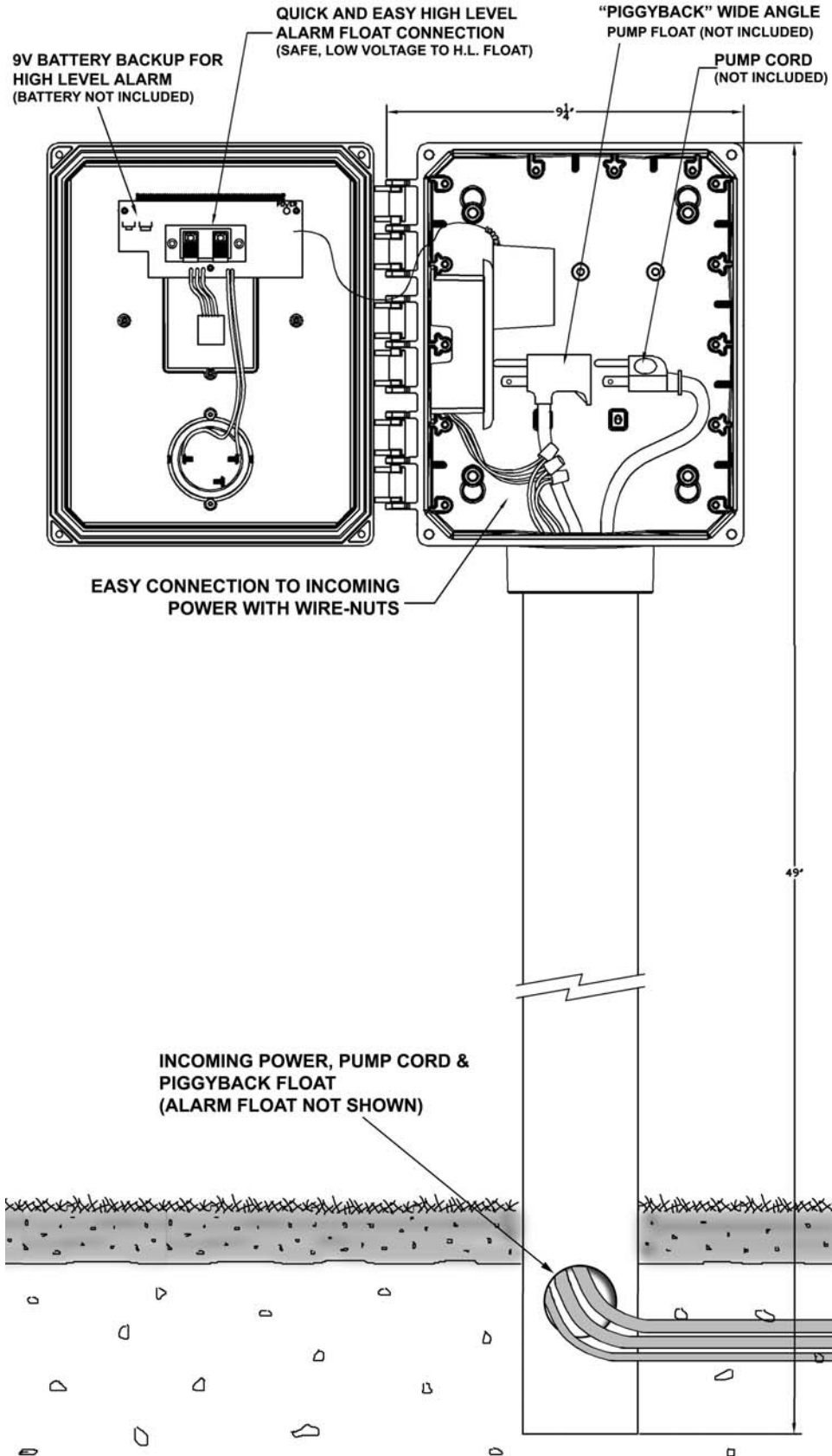
Be sure to follow Electric Code, ANSI/NFPA 70, when installing this unit to prevent moisture from entering or building up inside equipment.

1. Decide mounting location.
2. Determine the depth at which you want to bury the pedestal. You will need to decide whether you want to run the pump wire, incoming power, and float wire feeds into the pedestal through the hole drilled in the pedestal or through the bottom of the pedestal (Either way is acceptable).
3. Bring your incoming power, pump power cord, "piggyback" pump float, & alarm float wires up the center of the inside of the pedestal. Allow enough slack for:
 - The incoming power wires to wire-nut to the leads coming out of the outlet box
 - The "piggyback" float to plug into the available outlet
 - The pump cord to plug into the "piggyback" float
 - The alarm float to plug into the speaker style push terminals on the circuit board(Can't find these locations? Please see typical installation drawing on the backside of this page).
4. Be sure proper precautions are taken to seal the hole in the bottom of the enclosure where the wires enter to prevent the unwanted infiltration of gas and moisture!
5. With all wires properly connected inside the panel it's time to test the operation.
 - Manually tip up the "piggyback" float to make sure that it starts and stops the pump properly.
 - Manually tip up the alarm float to make sure it turns on and off the audible and visual high water alarms.
6. Using the Test - Silence - Normal toggle switch on the outside of the enclosure periodically test unit to make sure the unit is working properly. The test mode will test the audible and visual alarms, the silence mode with silence the audible alarm during an alarm condition, and the normal mode allows the system to operate using the alarm and control floats.

Note: Installing a 9V battery to the clip on the circuit board will allow the panel to alarm during a power outage.



Typical Installation Drawing



CSI *controls*
Alarms / Controls / Accessories