



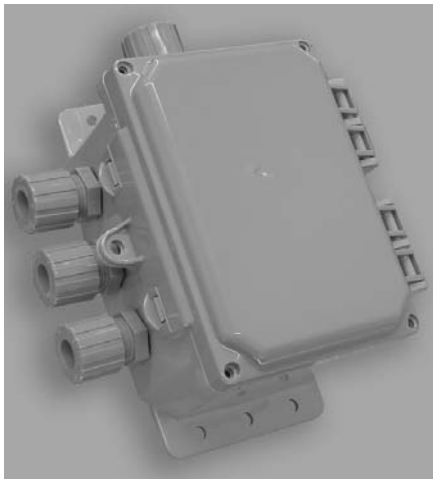
# Junction Boxes

## FEATURES:

- Non-Corrosive Poly Enclosures
- Includes Motor, Control & Float Cord Grips
- Neatly Organized System Connections

## APPLICATIONS INCLUDE:

Motor, Control & Float Connections in:  
 Sump & Sewage Basins  
 Septic Tanks & Aeration Systems  
 Cisterns & Atmospheric Storage Tanks



**CSJB5735**

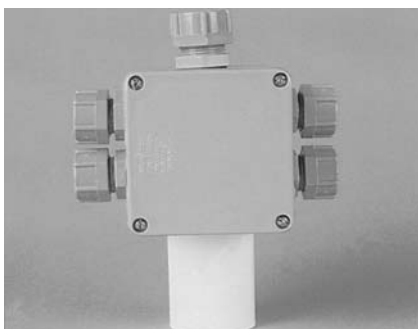
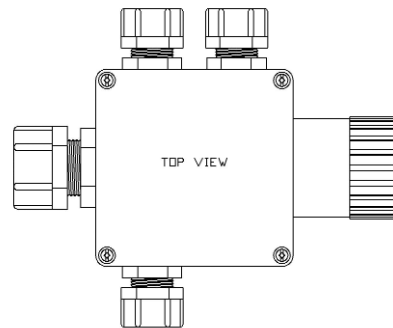
*New*

**Standard Latching Cover (No Screws Required).**

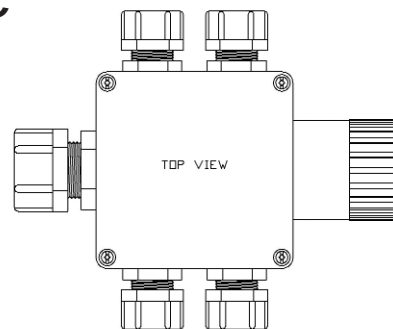
CSI offers many different size junction boxes to meet your needs. Custom cord grip configurations are available. Please consult the factory or factory representative for special configurations and pricing. Various cord grips are available. *Cord grips pictured are subject to change without notice.*



**SJB4415**



**SJB4415C**

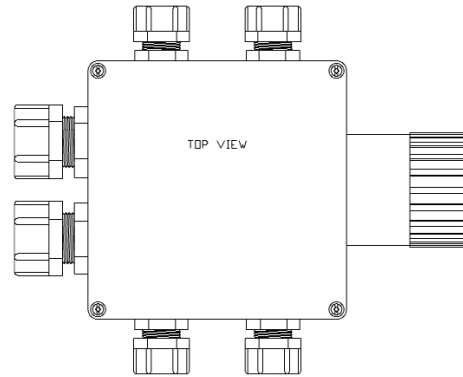
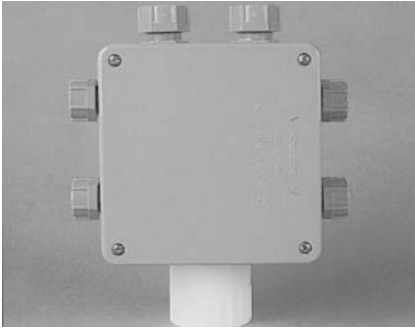


ACCESSORIES

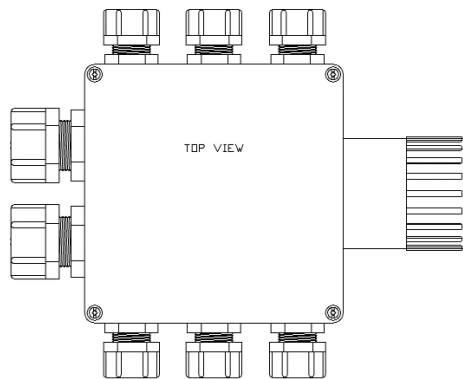
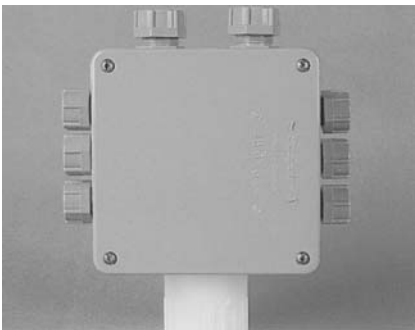


# Junction Boxes

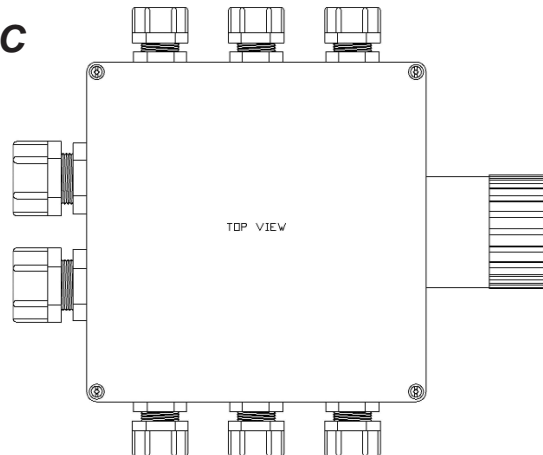
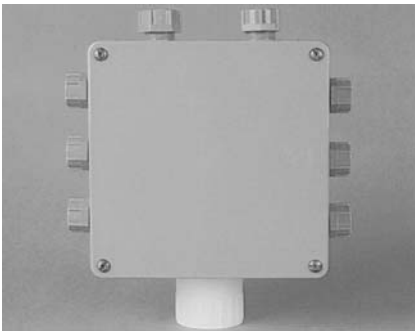
**DJB6620**



**DJB6620C**



**DJB8820C**



Model	Box Size (Inches)	Hub Size	Motor Cord Grip (Dia. x Qty)	Control Cord Grip (Dia. x Qty)	Float Cord Grip (Dia. x Qty)	Approx. Ship Weight	List Price
CSJB5735	5 x 7 x 3.5	1.5" NPT	.500-.625 (1)	N/A	.312-.375 (3)	3 lbs	\$69.00
SJB4415	4 x 4 x 4	1.5" NPT	.500-.625 (1)	N/A	.312-.375 (3)	2 lbs	\$84.00
SJB4415C	4 x 4 x 4	1.5" NPT	.500-.625 (1)	.438-.500 (1)	.312-.375 (3)	2 lbs	\$90.15
DJB6620	6 x 6 x 4	2" NPT	.500-.625 (2)	N/A	.312-.375 (4)	3 lbs	\$103.20
DJB6620C	6 x 6 x 4	2" NPT	.500-.625 (2)	.438-.500 (2)	.312-.375 (4)	3 lbs	\$114.81
DJB8820C	8 x 8 x 4	2" NPT	.688-.812 (2)	.438-.500 (2)	.312-.375 (4)	5 lbs	\$148.84