



Sentry Series ED1523 NEMA 1 Duplex Controls

FEATURES:

- Red Alarm Light
- 2 - Amber Run Lights
- High Decibel Audible (optional)
- NEMA 1 Powder Coat Steel Enclosure
- Butt Hinge Enclosure Door
- 1/4 Turn Door Latch
- Mounting Holes on Enclosure Back
- 2 - Motor Circuit Breakers
- Automatic Alternating Relay/Override Circuit
- 2 - 3 Pole, Non-Reversing Contactors
- 2 - "Hand/Off/Auto" Heavy Duty Toggles
- Control Power "On/Off" Heavy Duty Toggle
- 3 Amp, Circuit Fuse Protection
- Alarm "Test" Push Button
- Field Wiring Terminal Strips
- UL 508A Listing (optional)
- One Year Limited Warranty



ED1523A shown

APPLICATIONS INCLUDE:

- Starting & Stopping Pump for:
 - Sump & Sewage Basins
 - Septic Tanks & Aeration Systems
 - Cisterns & Atmospheric Storage Tanks
 - Chemical Solution Tanks
 - And Many More...

AVAILABLE OPTIONS:

- Vibrating Buzzer (w/Automatic Reset Silence Circuit)
- UL 508A Listing

Specifications

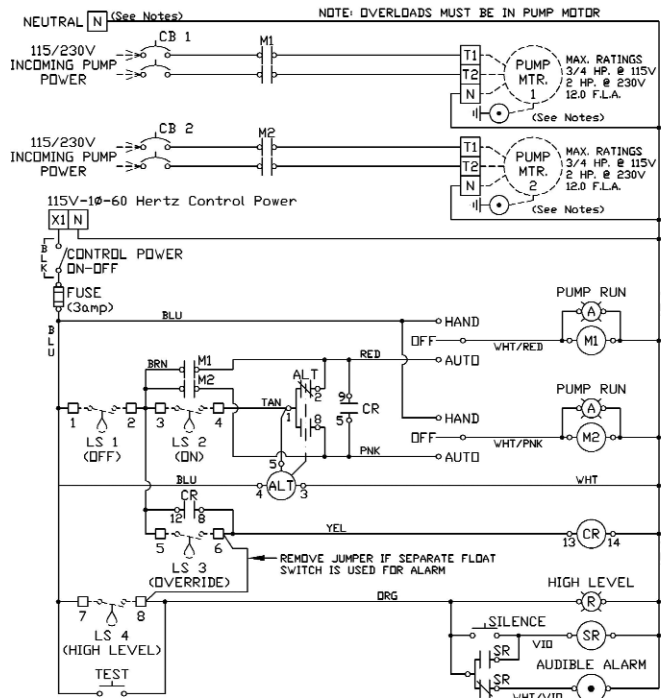
Model	Location Use	Max Full Load Amps	Enclosure Type	Enclosure Material	Input Power VAC -Ph	Audible Included	Control Fuse	Approx Ship Weight	List Price Panel Only	List Price Panel w/ Floats & Bracket*
ED1523	Indoor	12	NEMA 1	Painted Galv	115/230-1	---	3 Amp	21 lbs	\$698.71	\$834.73
ED1523A	Indoor	12	NEMA 1	Painted Galv	115/230-1	Buzzer	3 Amp	21 lbs	\$714.76	\$850.78
ED1523HD	Indoor	18	NEMA 1	Painted Galv	115/230-1	---	3 Amp	21 lbs	\$798.71	\$934.73
ED1523AHD	Indoor	18	NEMA 1	Painted Galv	115/230-1	Buzzer	3 Amp	21 lbs	\$814.76	\$950.78

*Add Suffix - FB to Model # If Ordering Float Switch and Float Switch Mounting Bracket Option
 Float Kit Includes (4) MPF-0-10 Float Switches & (1) FSB-SS4 Float Switch Mounting Bracket

Can't Find What You Need Listed Above?
 Remember CSI can custom build control panels to meet your specific needs!



Sentry Series ED1523 NEMA 1 Duplex Controls



Model #ED1523A

- NOTES:
- 230V Pump & Power Supply
 - 1) Connect Power Supply to top of CB 1 & CB 2
 - 2) Connect Pump to Terminals T1 & T2
 - 115V Pump & Power Supply
 - 1) Connect Power Supply to Top of CB 1 terminal L1
 - 2) Connect Pump to Terminals T1 & N

